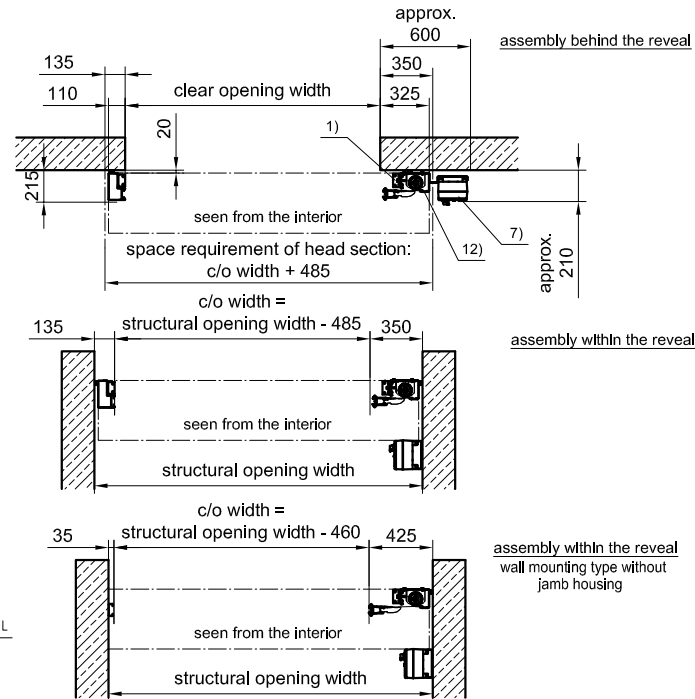
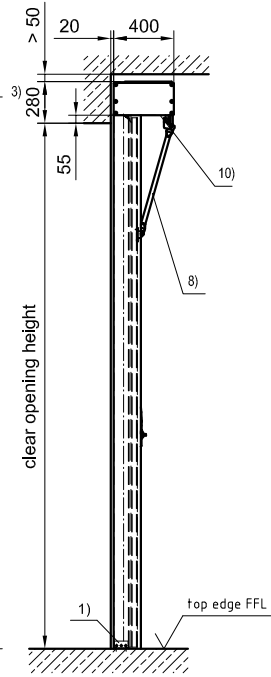
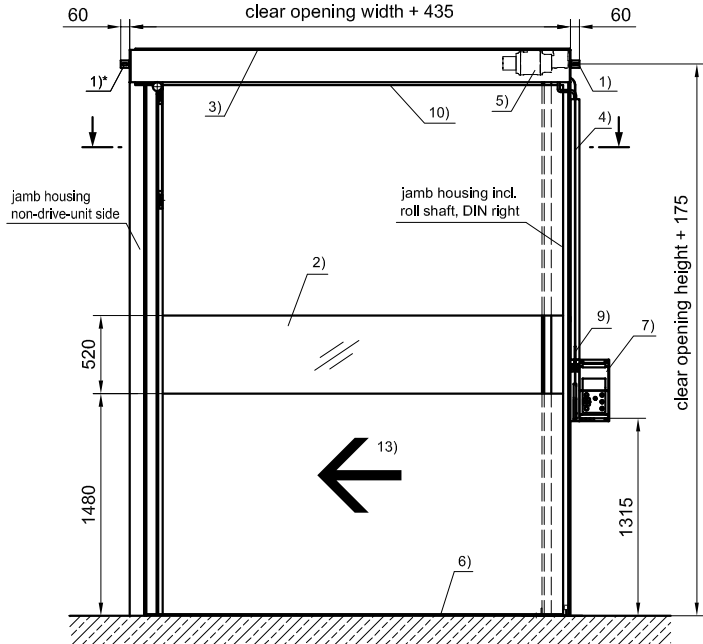


**view from inside**

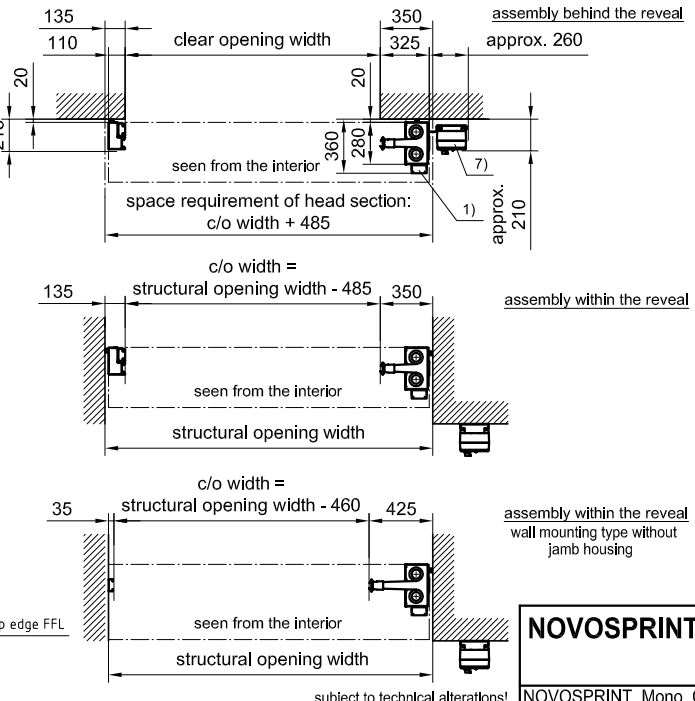
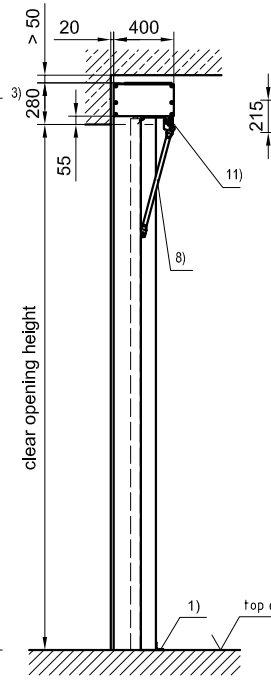
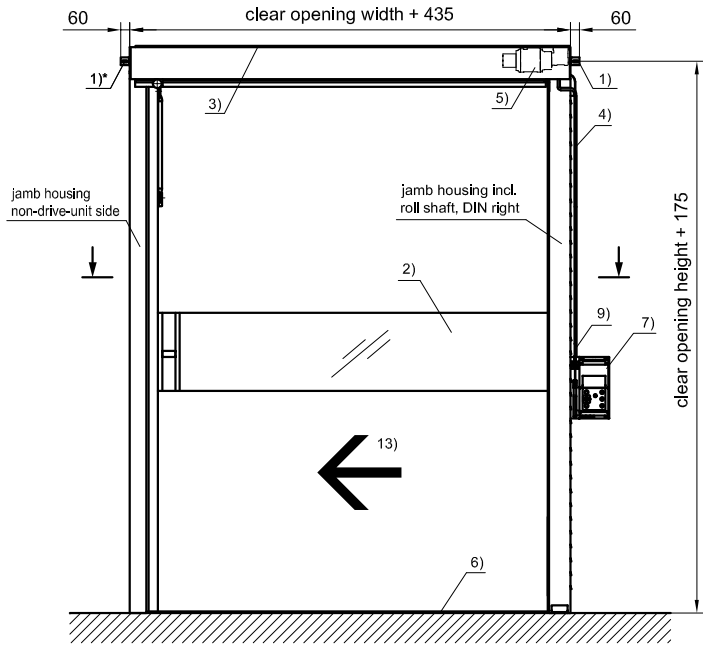
single skinned - DIN left  
clear opening width + 435



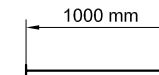
- 1) fixing bracket  
\* does not apply for wall mounting
- 2) vision element
- 3) top cover
- 4) cable duct
- 5) drive unit
- 6) function gap
- 7) Standard control panel 370 x 194 x 155 - assembly on drive-unit side. As an alternative wall mounting is possible.
- 8) right stay bar: option: anti-crush protection with an unlatch mechanism for c/o height >2800  
for c/o height ≤ 2800: right stay bar = horizontal position
- 9) emergency operation typically on drive-unit side
- 10) bottom cover incl. cable guide
- 11) bottom cover
- 12) cover for jamb housing is optional
- 13) DIN left = closing from right to left  
seen from the interior (ref. to DIN 107)

**view from inside**

double skinned - DIN left  
clear opening width + 435



- Option: DIN right = closes to the right (mirror image)
- concerning colour and type of surface, please refer to the technical data sheet of the NOVOSPRINT Mono GA
- dimensions valid for single- and double-skinned doors



subject to technical alterations!